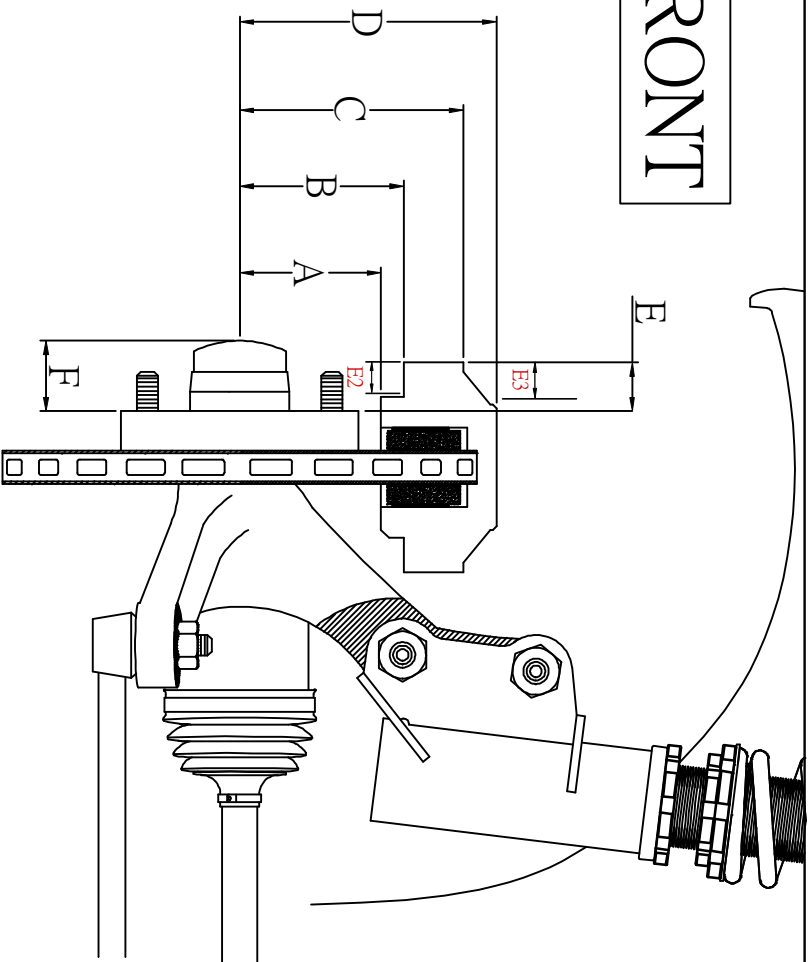


# FRONT



- A. Distance between Hub center point to bottom edge of caliper. A. \_\_\_\_\_ mm
- B. Distance between Hub center point to near edge of outward face of caliper. B. \_\_\_\_\_ mm
- C. Distance between Hub center point to far end edge of outward face of caliper. C. \_\_\_\_\_ mm
- D. Distance between Hub center point to the top edge of caliper. D. \_\_\_\_\_ mm
- E. The distance of caliper over the hub mounting surface. E. \_\_\_\_\_ mm

## TYPICALLY OPPOSING PISTON CALIPER ONLY

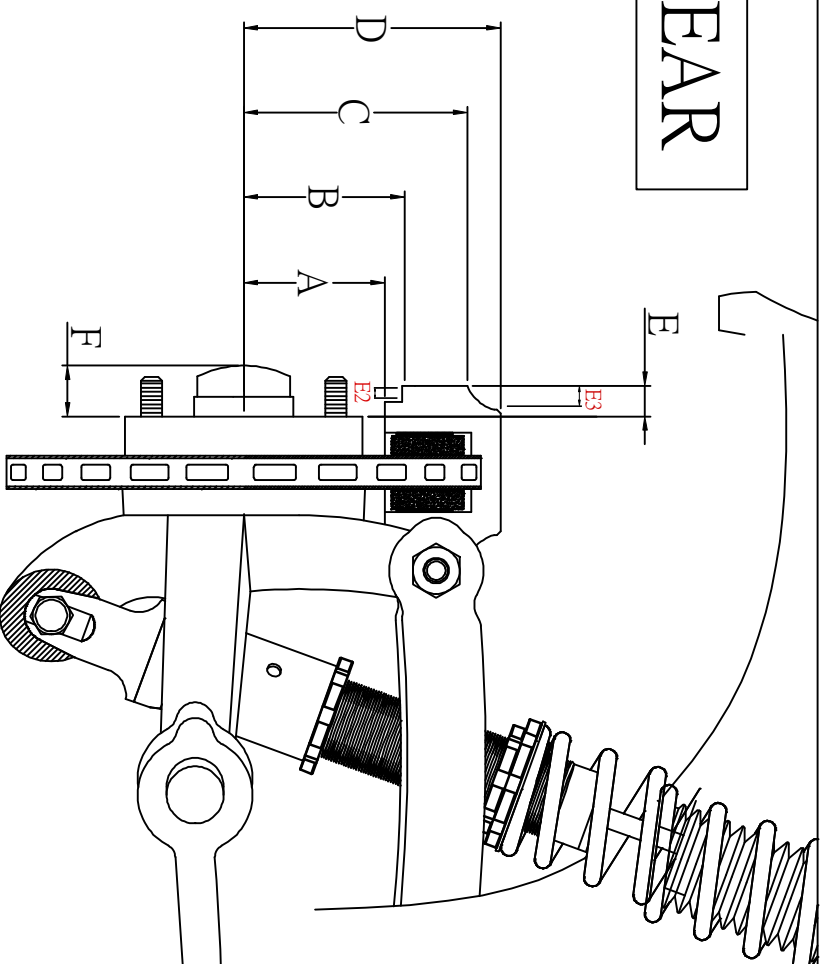
**E2.** The distance of the recess from the face of the caliper. (inner) **E2.** \_\_\_\_\_ mm

## TYPICALLY OPPOSING PISTON CALIPER ONLY

**E3.** The distance of the recess from the face of the caliper. (outer) **E3.** \_\_\_\_\_ mm

F. Protrusion of drive shaft over hub mounting surface. F. \_\_\_\_\_ mm

# REAR



- A. Distance between Hub center point to bottom edge of caliper. A. \_\_\_\_\_ mm
- B. Distance between Hub center point to near edge of outward face of caliper. B. \_\_\_\_\_ mm
- C. Distance between Hub center point to far end edge of outward face of caliper. C. \_\_\_\_\_ mm
- D. Distance between Hub center point to the top edge of caliper. D. \_\_\_\_\_ mm
- E. The distance of caliper over the hub mounting surface. E. \_\_\_\_\_ mm

## TYPICALLY OPPOSING PISTON CALIPER ONLY

**E2.** The distance of the recess from the face of the caliper. (inner) **E2.** \_\_\_\_\_ mm

## TYPICALLY OPPOSING PISTON CALIPER ONLY

**E3.** The distance of the recess from the face of the caliper. (outer) **E3.** \_\_\_\_\_ mm

F. Protrusion of drive shaft over hub mounting surface. F. \_\_\_\_\_ mm